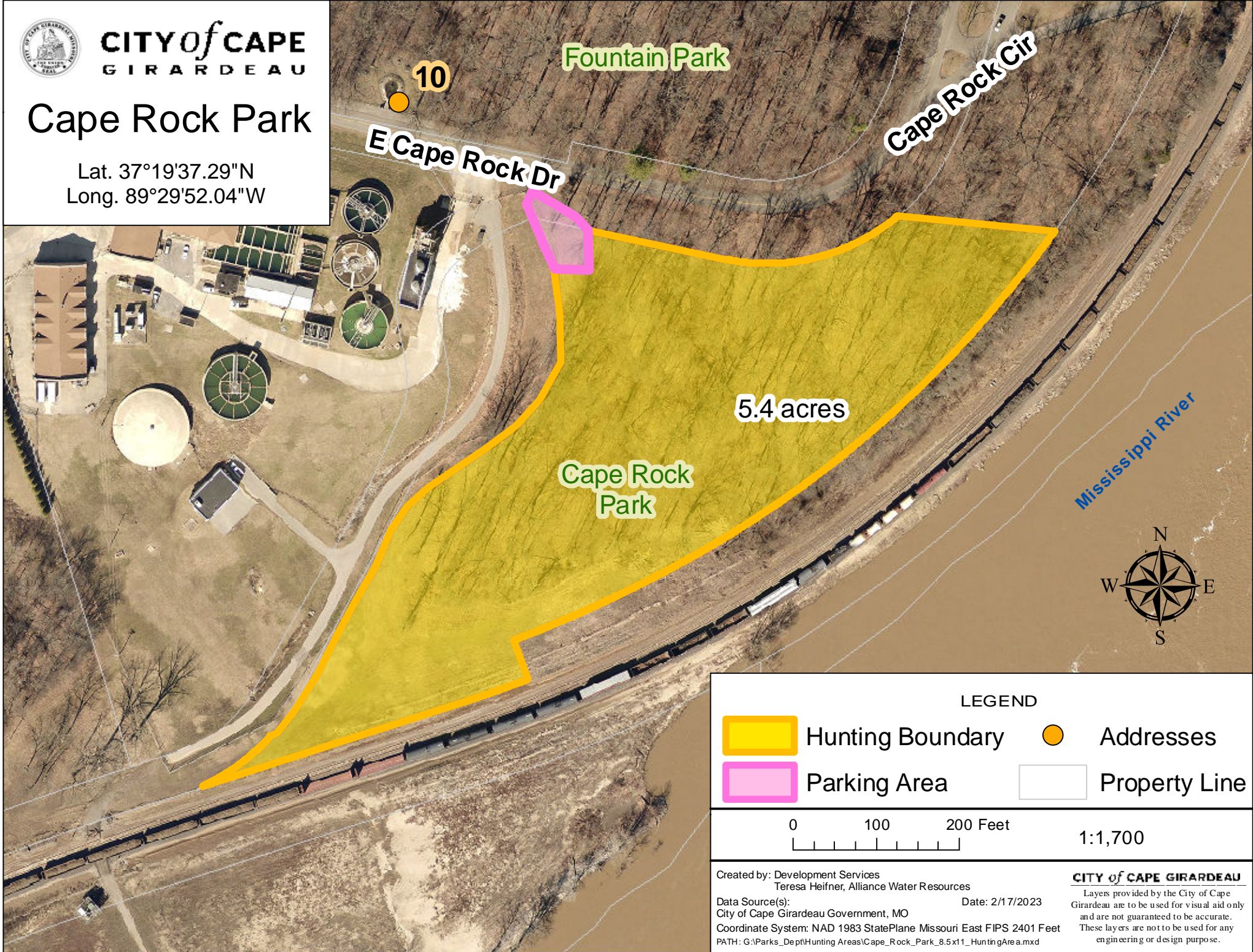








CITY of CAPE
GIRARDEAU

Cape Rock Park

Lat. 37°19'37.29"N
Long. 89°29'52.04"W



LEGEND

-  Hunting Boundary
-  Parking Area
-  Addresses
-  Property Line

0 100 200 Feet

1:1,700

Created by: Development Services
Teresa Heifner, Alliance Water Resources

Data Source(s): City of Cape Girardeau Government, MO
Coordinate System: NAD 1983 StatePlane Missouri East FIPS 2401 Feet
PATH: G:\Parks_Dept\Hunting Areas\Cape_Rock_Park_8.5x11_HuntingArea.mxd

Date: 2/17/2023

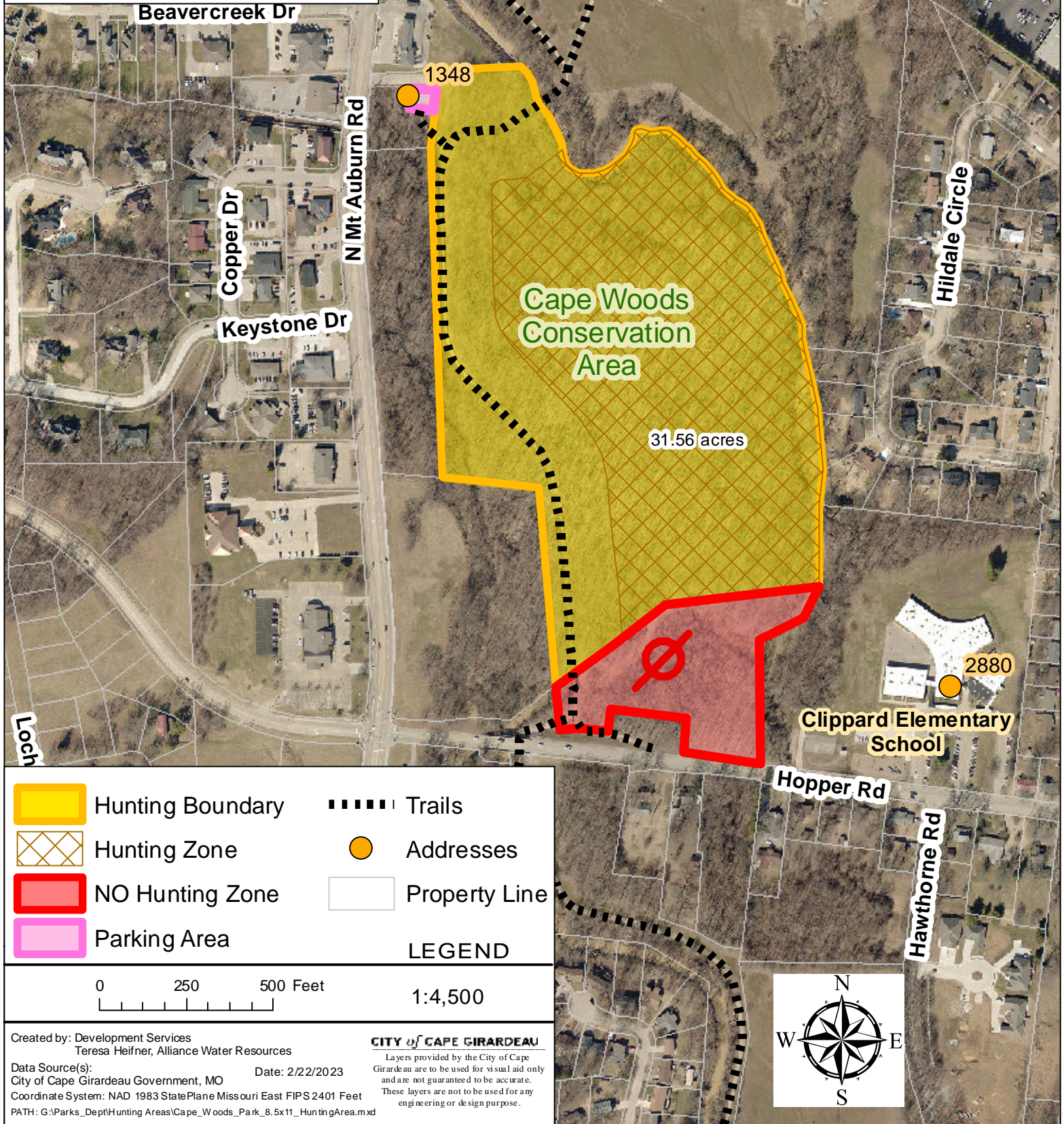
CITY of CAPE GIRARDEAU
Layers provided by the City of Cape Girardeau are to be used for visual aid only and are not guaranteed to be accurate. These layers are not to be used for any engineering or design purpose.



CITY of CAPE
GIRARDEAU

Cape Woods Conservation Area

Lat. 37°19'29.48"N
Long. 89°34'11.22"W





CITY of CAPE
GIRARDEAU

Casquin Park

Lat. 37°19'54.07"N
Long. 89°31'27.71"W



Hunting Area
New in 2023



NO Hunting
Zone



Parking Area



Addresses



Property Line

LEGEND

0 100 200 Feet

1:2,000

Created by: Development Services
Teresa Heifner, Alliance Water Resources

Data Source(s): City of Cape Girardeau Government, MO Date: 4/12/2023

Coordinate System: NAD 1983 StatePlane Missouri East FIPS 2401 Feet

PATH: G:\Parks_Dept\Hunting Area st\Casquin_Park_8.5x11_HuntingArea.mxd

CITY of CAPE GIRARDEAU

Layers provided by the City of Cape Girardeau are to be used for visual aid only and are not guaranteed to be accurate. These layers are not to be used for any engineering or design purpose.



CITY of CAPE
GIRARDEAU

Delaware Park

Lat. 37°20'20.44"N
Long. 89°31'50.14"W

Old Sprigg Street Rd

2140

Delaware Park

11.23 acres

Lexington Ave

1149

1145

1141

1129

1137

1133



LEGEND



Hunting Boundary



Addresses



Parking Area



Property Line

0 100 200 Feet

1:2,000

Created by: Development Services
Teresa Heifner, Alliance Water Resources

Data Source(s): City of Cape Girardeau Government, MO
Coordinate System: NAD 1983 StatePlane Missouri East FIPS 2401 Feet
Date: 2/17/2023
PATH: G:\Parks_Dept\Hunting Areas\Delaware_Park_8.5x11_HuntingArea.mxd

CITY of CAPE GIRARDEAU
Layers provided by the City of Cape Girardeau are to be used for visual aid only and are not guaranteed to be accurate. These layers are not to be used for any engineering or design purpose.



**CITY of CAPE
GIRARDEAU**

Fountain Park

Lat. 37°19'42.32"N
Long. 89°29'53.71"W

LEGEND



Hunting Boundary



Addresses



Parking Area



Property Line

0 100 200 Feet

1:1,632

Created by: Development Services
Teresa Heifner, Alliance Water Resources

Date: 2/17/2023

Data Source(s):

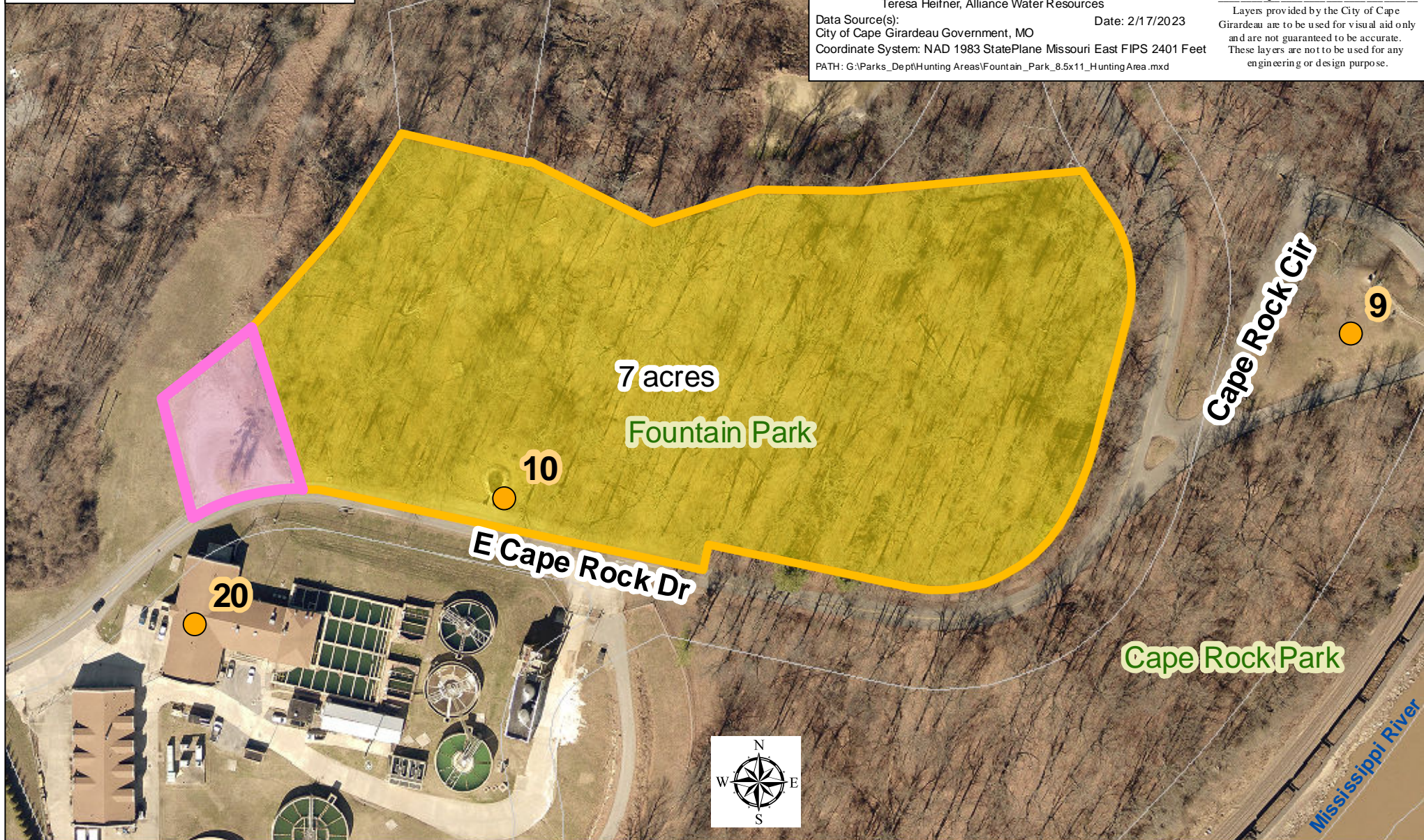
City of Cape Girardeau Government, MO

Coordinate System: NAD 1983 StatePlane Missouri East FIPS 2401 Feet

PATH: G:\Parks_Dept\Hunting Areas\Fountain_Park_8.5x11_HuntingArea.mxd

CITY of CAPE GIRARDEAU

Layers provided by the City of Cape Girardeau are to be used for visual aid only and are not guaranteed to be accurate. These layers are not to be used for any engineering or design purpose.





CITY of CAPE
GIRARDEAU

Shawnee Park

Lat. 37°17'32.49"N
Long. 89°32'41.52"W



LEGEND

- Hunting Area New in 2023
- Parking Area
- Hunting Boundary
- Addresses
- Trails
- Property Line

0 300 600 Feet

1:4,000

Created by: Development Services
Teresa Heifner, Alliance Water Resources

Data Source(s): City of Cape Girardeau Government, MO
Coordinate System: NAD 1983 StatePlane Missouri East FIPS 2401 Feet
PATH: G:\Parks_DepthHunting Areas\Shawnee Park_8.5x11_HuntingArea.mxd

Date: 2/22/2023

CITY of CAPE GIRARDEAU

Layers provided by the City of Cape Girardeau are to be used for visual aid only and are not guaranteed to be accurate. These layers are not to be used for any engineering or design purpose.










**CITY of CAPE
GIRARDEAU**

State Highway 177

Lat. 37°20'27.05"N Long. 89°30'20.41"W



LEGEND

-  Hunting Boundary
-  Parking Area
-  Hunting Area New in 2023
-  Addresses
-  Property Line

0 100 200 Feet 1:1,400

Date: 2/18/2023

CITY of CAPE GIRARDEAU

Created by: Development Services
Teresa Heifner, Alliance
Water Resources

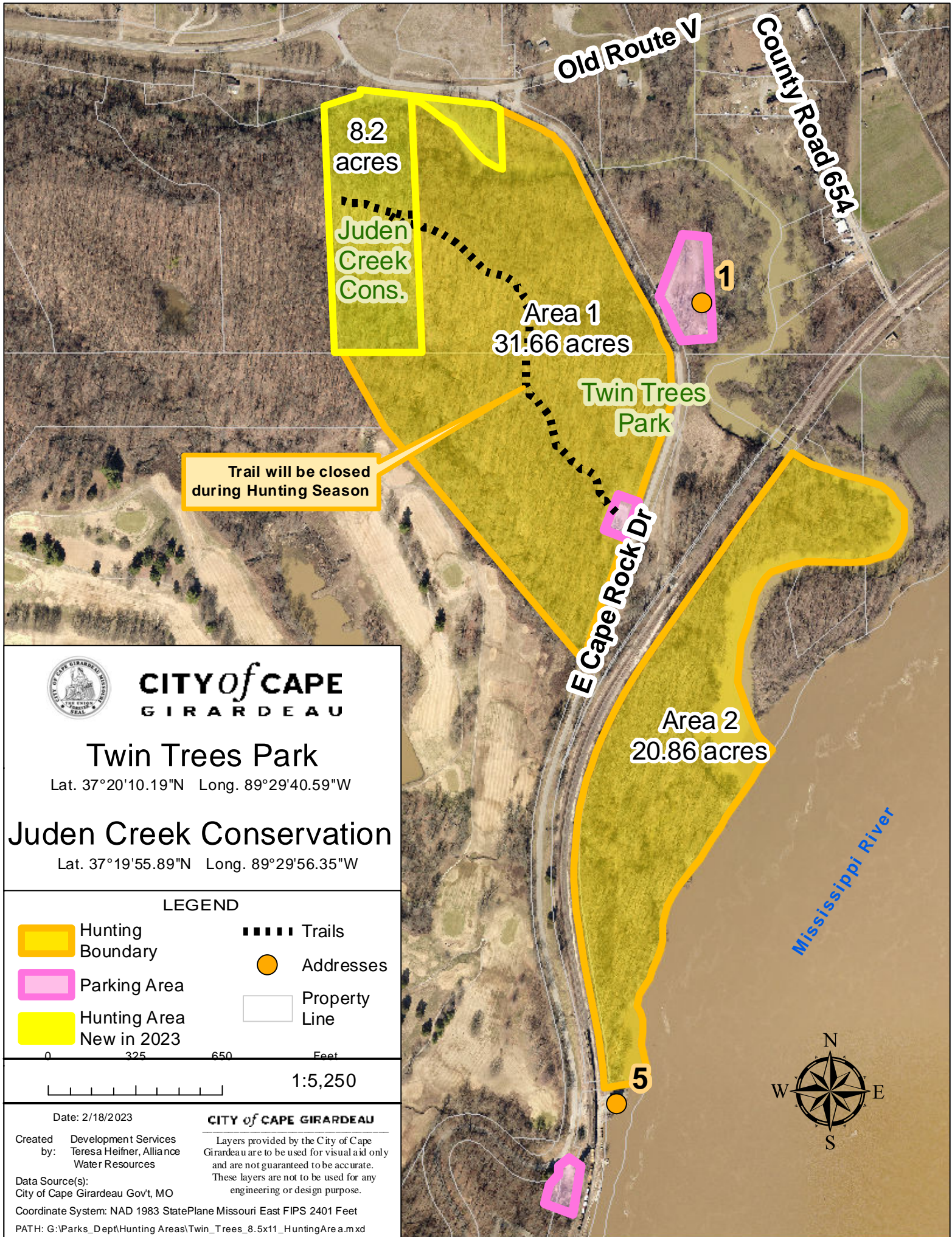
Layers provided by the City of Cape Girardeau are to be used for visual aid only and are not guaranteed to be accurate. These layers are not to be used for any engineering or design purpose.

Data Source(s):
City of Cape Girardeau Gov't, MO

Coordinate System: NAD 1983 StatePlane Missouri East FIPS 2401 Feet

PATH: G:\Parks_Dept\Hunting Areas\StateHwy177_8.5x11_HuntingArea.mxd



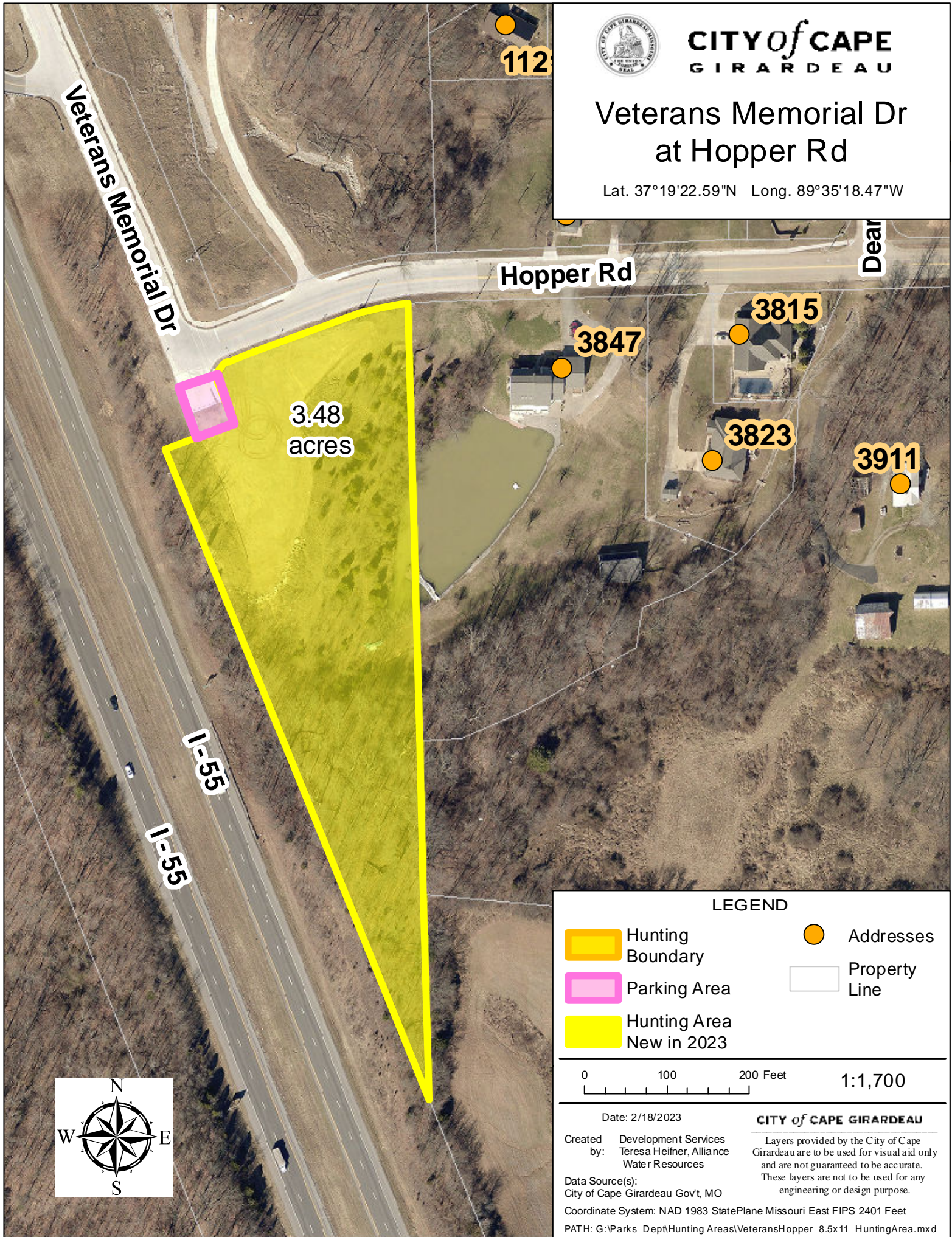




CITY of CAPE
GIRARDEAU

Veterans Memorial Dr at Hopper Rd

Lat. 37°19'22.59"N Long. 89°35'18.47"W



LEGEND



Hunting
Boundary



Parking Area



Hunting Area
New in 2023



Addresses



Property
Line

0 100 200 Feet

1:1,700

Date: 2/18/2023

CITY of CAPE GIRARDEAU

Created by: Development Services
Teresa Heifner, Alliance
Water Resources

Layers provided by the City of Cape
Girardeau are to be used for visual aid only
and are not guaranteed to be accurate.
These layers are not to be used for any
engineering or design purpose.

Data Source(s):
City of Cape Girardeau Gov't, MO

Coordinate System: NAD 1983 StatePlane Missouri East FIPS 2401 Feet

PATH: G:\Parks_DepthHunting Areas\VeteransHopper_8.5x11_HuntingArea.mxd